

User's Manual

USB-Parallel Printer Cable

Attention: You don't need to install any other driver when use USB-Parallel Printer Cable on Windows 2000&XP.

● Introduction

Congratulations on your purchase of the USB-Parallel Printer Cable. This unique cable adapter allows you to attach your computer to most parallel printer device through the USB port and get faster printing results.

The USB-Parallel printer cable allows your PC to print with parallel printer devices connected through the USB port. Just plug the USB connector of the cable into the USB port of your PC, and the other end into the centronics connector of the standard parallel printer. USB (Universal Serial Bus) interface provides up to 12Mbps data throughput, so printing is much faster compared when connected to standard parallel port (150kbs). The USB-Parallel cable also provides true plug-and-play and hot-plug capability – simply plug in the cable under the Windows operating system and the cable will be instantly detected.

● Package Content

- Hardware: USB-Parallel Printer Cable
- Software: USB Printing Support
- User's Manual

● Product Features

- USB specification revision 1.1 compliant
- USB Printer Class Specification 1.0 compliant
- USB full speed (12Mbps) with bus powered
- True Bi-directional parallel communication

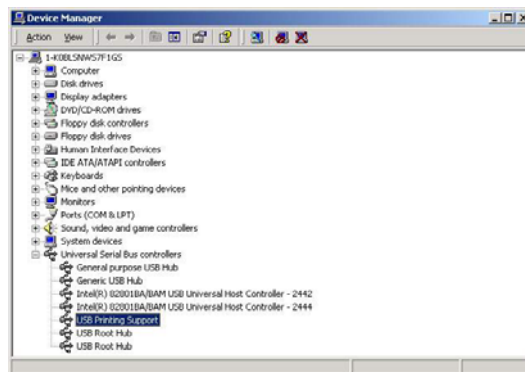
● System Requirements

- IBM PC 486DX4-100 MHz CPU or higher or compatible system
- Available USB port
- Windows 2000&XP

● Driver Installation (WIN2000&XP)

Follow the steps below to install driver of USB-Parallel printer cable:

- ◆ Power on your computer and make sure that the USB port is enabled and working properly.
- ◆ Plug in the USB-Parallel cable into the USB port and Windows 2000&XP will detect the device and installing the **USB PRINTING SUPPORT**.

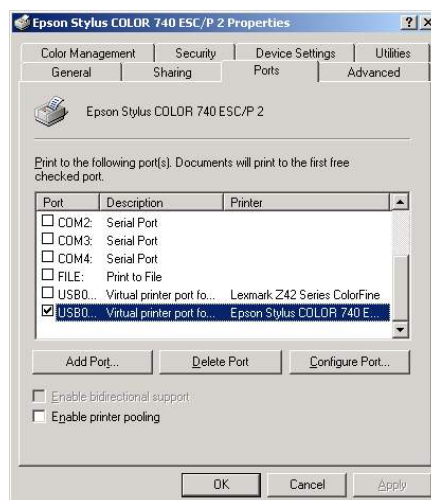


- ◆ When Windows finished installing the software .you have to check the Control Panel-System-Hardware-Device Manager-Universal Serial Bus Controller it will show an **USB Printing Support**.

● Setting Up the Printer Device

Follow the steps below on how to connect your printer to the USB port of your PC:

- ◆ Turn off your printer. Plug the centronics connector of the USB-Parallel printer cable into your printer. If you have a parallel cable connected to it, remove the cable and replace it with the USB-Parallel printer cable. Turn on the printer afterwards.
- ◆ Turn on your computer and plug in the USB connector of the USB-Parallel printer cable into the USB port.
- ◆ If you have already installed a printer device before, click Start, Settings, Printers. Click right button of your mouse on the printer and click on **PORTS** to select the **USB0**.



- ◆ If you do not have a printer installed yet, click on Start, Settings, Printers, Add Printer. The **Add Printer Wizard** will start and assist you in installing a new printer device. Select the printer manufacturer and model name from the list provided by the wizard or use the printer driver diskette supplied with your printer.
- ◆ When prompted which port the printer will use, click on **USB0**.
- ◆ Follow the succeeding instructions to complete the installation and also run **Print Test Page** to see if it can print without problems.

● **Disclaimer**

Information in this document is subject to change without notice. The manufacturer does not make any representations or warranties (implied or otherwise) regarding the accuracy and completeness of this document and shall in no event be liable for any loss of profit or any other commercial damage, including but not limited to special, incidental, consequential, or other damages.

● **FCC Statement**

This device generates and uses radio frequency and may cause interference to radio and television reception if not installed and used properly. This has been tested and found to comply with the limits of a Class B computing device in accordance with the specifications in Part 15 of FCC Rules. These specifications are designed to provide reasonable protection against such interference in a residential installation. However, there is no guarantee that interference will not occur in a particular installation. If this device does cause harmful interference to radio or television reception, which can be determined by plugging the device in and out, the user can try to correct the interference by one or more of the following measures:

- Reorient or relocate the receiving antenna.
- Increase the separation between the device and receiver.
- Connect the computer into an outlet on a circuit different from that to which the receiver is connected.
- Consult the dealer or an experienced radio/TV technician for help.